



Flat 3 Peninsular Heights Bessborough Road, Poole BH13 7JS  
£425,000 Share of Freehold



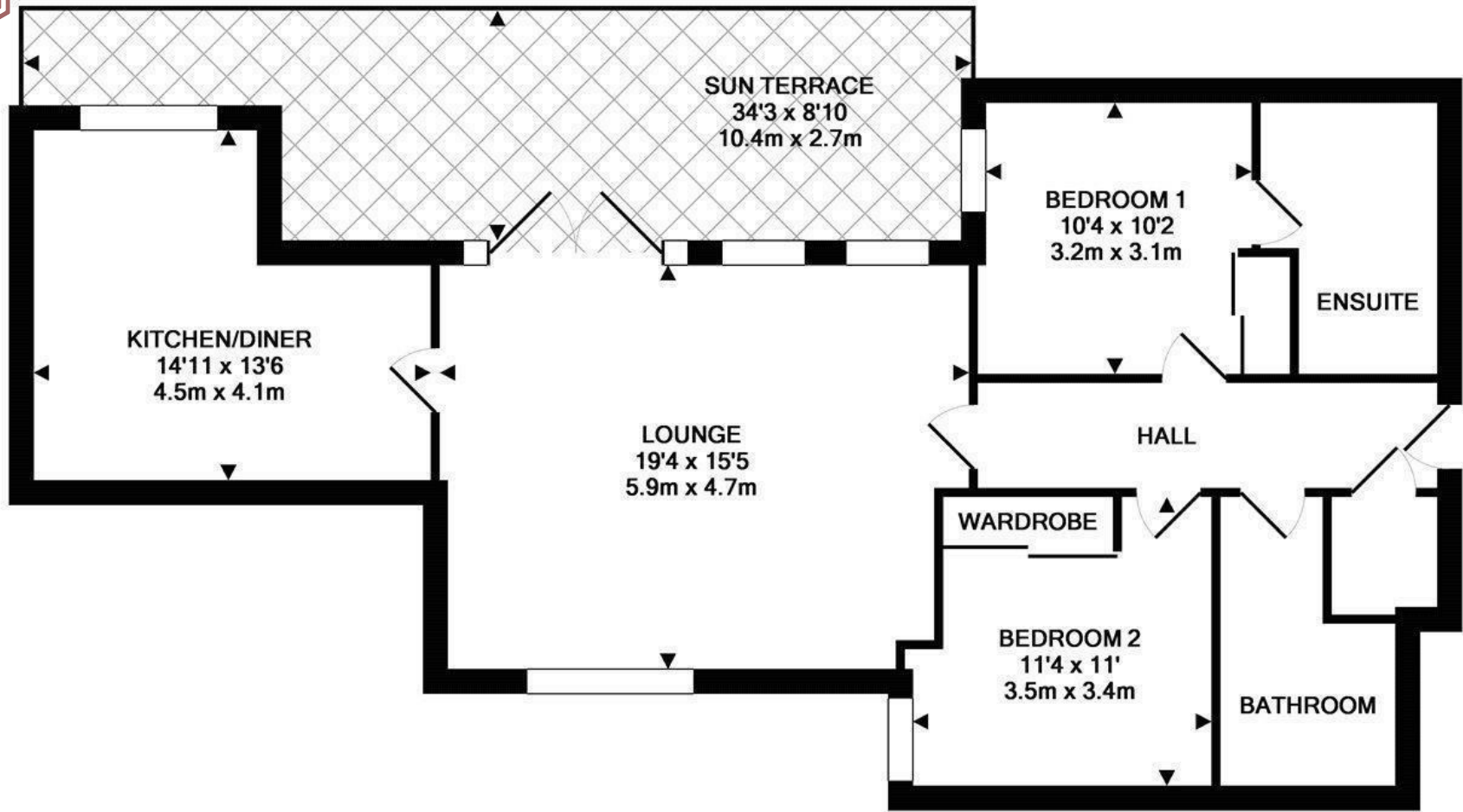


### Canford Cliffs

Canford Cliffs Village is well known for being one of the most prestigious places to live, it has an assortment of café bars, restaurants and speciality shops with a wide variety of properties ranging from luxury apartments to contemporary designed cliff top residences. The world famous Sandbanks Peninsula and Poole Harbour are nearby with safe sandy beaches, marinas and yacht clubs as well as a whole host of water-sports facilities. The 18 hole Championship Parkstone Golf Club is approximately a mile away whilst the more comprehensive towns of Poole and Bournemouth are approximately two miles equidistant.

### Property Comprises

A stylish two-bedroom apartment set within the sought-after Peninsular Heights development, just a short walk from Canford Cliffs village and the beach. The spacious living room opens onto a generous west-facing terrace, perfect for evening sun, while the separate kitchen/breakfast room is bright and well-appointed. The main bedroom features fitted wardrobes and a modern en-suite, complemented by a second double bedroom, a family bathroom, and a handy storage cupboard. With secure entry, allocated parking, and beautifully maintained communal grounds, this is relaxed coastal living at its best.



TOTAL APPROX. FLOOR AREA 908 SQ.FT. (84.3 SQ.M.)

Whilst every attempt has been made to ensure the accuracy of the floor plan contained here, measurements of doors, windows, rooms and any other items are approximate and no responsibility is taken for any error, omission, or mis-statement. This plan is for illustrative purposes only and should be used as such by any prospective purchaser. The services, systems and appliances shown have not been tested and no guarantee as to their operability or efficiency can be given  
Made with Metropix ©2017

Key Drummond

Tel: 01202 700771  
canfordcliffs@keydrummond.com

www.keydrummond.com

All room dimensions given above are approximate measurements  
These particulars are intended only to give a brief description of the property as a guide to prospective buyers. Accordingly:  
• Their accuracy is not guaranteed and neither Key Drummond Estate Agents, nor the vendors accept any liability in respect of their contents.  
• They do not constitute an offer of contract for sale.  
• Any prospective purchasers should satisfy themselves by inspection or otherwise as to the correctness of any statements or information in these particulars. Please refer to the Agents if you require further clarification or information.  
The Agent has not tested any apparatus, equipment, fixtures and fittings or services and so cannot verify that they are in working order or fit for the purpose. A buyer is advised to obtain verification from their Solicitor or Surveyor.

References to the Tenure of a Property are based on information supplied by the Seller. The Agent has not had sight of the title documents. A Buyer is advised to obtain verification from their Solicitor.

Energy Efficiency Rating		Current	Potential
Very energy efficient - lower running costs			
(92 plus) A			
(81-91) B			
(69-80) C			
(55-68) D			
(39-54) E			
(21-38) F			
(1-20) G			
Not energy efficient - higher running costs			
England & Wales		EU Directive 2002/91/EC	

Environmental Impact (CO <sub>2</sub> ) Rating		Current	Potential
Very environmentally friendly - lower CO <sub>2</sub> emissions			
(92 plus) A			
(81-91) B			
(69-80) C			
(55-68) D			
(39-54) E			
(21-38) F			
(1-20) G			
Not environmentally friendly - higher CO <sub>2</sub> emissions			
England & Wales		EU Directive 2002/91/EC	